

PERFORMANCE PANELS



PRODUCT PORTFOLIO





## Contents

### Introduction

Performance Panels Timeline ..... page 4

### Trespa®

TopLab® Collection ..... page 6

Meteon® and Pura NFC® Collection ..... page 7

Virtuon® Collection ..... page 8

### Arpa

Athlon Collection ..... page 10

Special Compacts Collection ..... page 12

### Westag & Getalit AG

Getacore® Solid Surface Collection ..... page 14

### REHAU®

Crystal Polymeric Glass Collection ..... page 16

### General Information

Services ..... page 17

Gallery ..... page 18

## About Performance Panels Ltd



### Timeline

#### 1995

Performance Panels (Distribution) Limited commence trading from a factory unit in Hull.

#### 2000

Re-location to new self-contained 15,000ft<sup>2</sup> factory and offices in Halifax.

Performance Panels (Distribution) Limited changed its name to Performance Panels Limited.

Trespa<sup>®</sup> TopLab<sup>®</sup>PLUS and Virtuon added to product portfolio.

#### 2004

Acquired additional factory. 6,000ft<sup>2</sup>

#### 2009

Accredited ISO 9001/14001.

#### 2010

Acquired additional factory. 8,000ft<sup>2</sup>.

#### 2012

Trespa Athlon Crystal rebranded as Trespa<sup>®</sup> TopLab<sup>®</sup>BASE.  
Trespa<sup>®</sup> Meteon<sup>®</sup> added to product portfolio.

#### 2014

Arpa Athlon Compact range added to the product portfolio.

#### 2015

Accredited FSC (COC).

#### 2016

GetaCore sheet material added to product portfolio.

Trespa Pura NFC<sup>®</sup> added to product portfolio.

#### 2017

Rehau Crystal Polymeric Glass added to product portfolio.

#### 2018

Performance Panels re-brand and new website developed.

Our factory and offices redesigned and furnished.



---

TRESPA®

High quality panels  
for scientific surface  
solutions, exterior  
cladding & internal  
wall linings

---

For more information or to order  
samples, please visit:

[www.performance-panels.com](http://www.performance-panels.com)

# TopLab® Collection



Trespa® Toplab® offers 3 different product lines developed specifically for the most demanding functional and scientific applications.

TopLab surfaces combine the essential requirements of long lasting surface hygiene, impact and scratch resistance, flexibility and ease of use, with an attractive and timeless palette of high quality decors.

### TRESPA® TopLab®BASE

*Hardwearing and functional*

Engineered for long-lasting and good looks. Offering an outstanding performance where chemical resistance is not critical, but scratch and wear resistance are of great importance.

### TRESPA® TopLab®PLUS

*High chemical & stain resistance*

TopLab®PLUS is the perfect surface for quality worktops with inherent antibacterial properties and high resistance to a wide variety of aggressive chemicals.

An ideal choice in environments where hygiene, avoidance of contamination, sustainability and safety are of importance.

### TRESPA® TopLab®VERTICAL

*High cleanliness and hygiene*

Ideal for environments where bacteria and dirt pose a real threat. TopLab®VERTICAL provides chemically resistant and antibacterial surfaces for applications in functional and laboratory environments such as splashbacks, cladding in fume cupboards and cabinetry.

	APPLICATIONS	BENEFITS
TopLab®BASE	<ul style="list-style-type: none"> <li>• Worktops</li> <li>• Furniture</li> <li>• Shelving</li> </ul>	<ul style="list-style-type: none"> <li>• High scratch and wear resistance</li> <li>• Robust and long lasting</li> </ul>
TopLab®PLUS	<ul style="list-style-type: none"> <li>• High performance laboratory worktops</li> </ul>	<ul style="list-style-type: none"> <li>• Easy to clean</li> <li>• Highly resistant to aggressive chemicals</li> </ul>
TopLab®VERTICAL	<ul style="list-style-type: none"> <li>• Lining fume hoods</li> <li>• Cabinetry and peg boards</li> <li>• Splashbacks and wall linings</li> </ul>	<ul style="list-style-type: none"> <li>• Chemically resistant</li> <li>• Antibacterial</li> <li>• Low dirt accumulation</li> </ul>

# Meteon<sup>®</sup> and Pura NFC<sup>®</sup> Collection



## Trespa<sup>®</sup> Meteon<sup>®</sup>

*Spectacular façades*

Meteon<sup>®</sup> is a decorative high-pressure compact laminate (HPL) with an integral surface, manufactured using Trespa's unique in-house technologies, Electron Beam Curing (EBC).

This produces a highly stable and dense decorative panel, with good strength-to-weight ratios.

Meteon<sup>®</sup> panels are perfect for use in innovative and functional ventilated façade systems.

Available in a wide variety of textures, sizes, and colours

## Trespa Pura NFC<sup>®</sup>

*Natural fibre core planks*

Pura NFC<sup>®</sup> has an enhanced wood fibre-based core combined with a closed surface for high impact and scratch resistance. Available in a range of eight distinctive wood décors and 8 plain colours, it has strong resistance to weather, dirt and scratches. With a surface that cleans with a simple wipe, there is no need to paint or lacquer, or worry about unsightly stains and rot.

Easy to handle and simple to cut, Pura NFC<sup>®</sup> is ideal for both innovative and traditional ventilated façades. It can be installed with a contemporary flush finish, or traditional lap.

### Fabricating Trespa<sup>®</sup>

Cutting Trespa<sup>®</sup> panels is comparable to cutting high quality hardwood.

Trespa<sup>®</sup> panels may be machined using carpentry tools.

The use of Tungsten Carbide tools is advised.

	APPLICATIONS	BENEFITS
<b>Meteon<sup>®</sup></b>	<ul style="list-style-type: none"> <li>• Façade</li> <li>• Wall cladding</li> <li>• Balcony panelling</li> <li>• Sun blinds</li> <li>• Horizontal ceiling applications</li> </ul>	<ul style="list-style-type: none"> <li>• Impact resistant</li> <li>• Easy to clean</li> <li>• Colour stability</li> <li>• Weather resistant</li> <li>• Face fix or invisible fix</li> </ul>
<b>Pura NFC<sup>®</sup></b>	<ul style="list-style-type: none"> <li>• Façade</li> <li>• Wall cladding</li> </ul>	<ul style="list-style-type: none"> <li>• No need to paint or stain</li> <li>• Invisible fixing system</li> <li>• Highly weather resistant</li> </ul>

# Virtuon Collection



## Virtuon®

*For demanding internal applications*

Virtuon® is a decorative high pressure compact laminate. The surface is manufactured using Trespa's unique in-house technology, Electron Beam Curing (EBC).

Virtuon® materials resist bacterial growth and allow quick and effective cleaning - making them ideal for areas with heavy traffic and where bacteria and dirt may pose a real threat.

Virtuon is available in a broad range of basic, modern and trendsetting colours, including metallic options - with unique glittering properties and depth of colour.

Two classes of Virtuon® are available: Standard grade and Fire-Retardant grade (FR), with no minimum order quantity.

## Fabrication

Cutting Virtuon® panels is comparable to cutting high quality hardwood.

Virtuon® panels may be machined using carpentry tools.

The use of Tungsten Carbide tools is advised.

APPLICATION	BENEFITS
<ul style="list-style-type: none"> <li>• Wall linings</li> <li>• Lockers and Sanitary areas</li> <li>• Toilet cubicles</li> </ul>	<ul style="list-style-type: none"> <li>• Inherent antibacterial properties, without the introduction of antimicrobial additives</li> <li>• Panels can be cleaned frequently</li> <li>• High resistance to impact and humidity</li> <li>• Create interesting interiors with a variety of installation methods and finishing options</li> <li>• Significantly low dirt pick up, making Virtuon® easy to clean and disinfect</li> <li>• Extensive colour palette</li> </ul>





---

Arpa 

---

Arpa Industriale design  
and produce panels  
with high-quality HPL  
technology for  
'Made in Italy' solutions

---

For more information or to order  
samples, please visit:

[www.performance-panels.com](http://www.performance-panels.com)

# Athlon Collection



## Arpa Athlon 10 mm (for lockers)

Robust, double sided, decorative high-performance compact laminate panels, for interior applications.

Compact 10 mm panels are the ultimate material choice for the most demanding applications.

The Athlon Locker Collection has high impact, strength and water resistance. Panels are easy to clean, with excellent scratch and wear resistance.

The large format sheet size is perfectly optimised for standard locker dimensions; resulting in minimal waste and reduced costs.

Available in a wide range of classic, contemporary and trendsetting colours and finishes.

APPLICATIONS	BENEFITS
<ul style="list-style-type: none"> <li>• Changing room lockers</li> <li>• Hanging ceilings</li> </ul>	<ul style="list-style-type: none"> <li>• High impact, scratch, wear and tear resistance</li> <li>• 4200 mm x 1600 mm large sheet size for an optimised yield</li> <li>• Excellent low reflectivity to light</li> <li>• Heat resistance</li> <li>• Hygienic and easy to clean</li> <li>• Moisture resistance</li> </ul>

# Athlon Collection



## Arpa Athlon 12.7 mm (for cubicles and washrooms)

Suitable for retail, contract and interior applications, Athlon Cubicle & Washroom panels are available at Performance Panels in solid compact grade laminate 12.7 mm thick and complimented with thin HPL 0.8 mm.

Panels have high impact strength and excellent moisture resistance for the most demanding applications.

Décors manufactured with an Erre (R) surface texture have a smooth to the touch feel and a very slight texture, making the panels hygienic and easy to clean. Décors in the Alevè finish evoke the tactile surface of wood for a 'back to nature' feel.

Available in a wide range of classic, contemporary and trendsetting colours.

## Arpa Athlon 20 mm (for in-line cubicles)

Athlon 20 mm thick solid compact grade panels in a selected colour range are available with an Erre (R) surface texture to create up-market, stylish washrooms.

The 20 mm thick panels allow the long edges of cubicle doors to be rebated for an attractive and sophisticated flush finish. Ideal for most high-end commercial environments.

Panels are moisture, scratch and wear resistant, easy to clean and maintain.

### Fabrication

Machining Arpa panels is comparable to machining high quality hardwood.

The use of tungsten carbide tools is recommended.

	APPLICATIONS	BENEFITS
<b>Arpa Athlon 12.7 mm</b>	<ul style="list-style-type: none"> <li>• Toilet cubicles</li> <li>• Partitions/Wall panels</li> <li>• Shower panelling</li> <li>• Vanity unit panelling</li> <li>• IPS panels</li> </ul>	<ul style="list-style-type: none"> <li>• Impact, scratch, wear &amp; tear resistance</li> <li>• Low reflectivity to light</li> <li>• Highly water resistant</li> <li>• Hygienic and easy to clean</li> </ul>
<b>Arpa Athlon 20 mm</b>	<ul style="list-style-type: none"> <li>• Toilet cubicles</li> <li>• Changing facilities</li> </ul>	<ul style="list-style-type: none"> <li>• Ideal for a flush finish</li> <li>• Resistant to scratching and wear &amp; tear</li> <li>• Hygienic and easy to clean</li> <li>• Excellent moisture resistance</li> </ul>

## Arpa Special Compacts



### Arpa Solid Core

Solid Core is a double-sided, compact, decorative HPL with a monochromatic core, available in 21 colours.

Thickness ranges from 6 mm to 12 mm.

A unique and exciting material for use in many interior applications, including retail, education and hospitality.

### Arpa Unicolor

Unicolor is a compact, decorative HPL; a homogeneous non-porous material with increased density. The surface and the core layers have the same colour producing a uniformly coloured laminate.

Ideal for products requiring a superior quality material.

### Arpa Multicolor

Multicolor is a compact HPL where the surface and the core layers can have different colours to achieve a succession of coloured layers. Arpa Multicolor can be routed and engraved to produce impressive design effects.

### Arpa Special Compacts for Design Freedom

	APPLICATIONS	BENEFITS
Arpa Solid Core & Unicolor	<ul style="list-style-type: none"> <li>• Point of sale</li> <li>• Table and counter tops</li> <li>• Shelving</li> <li>• Chairs</li> <li>• Reception desks</li> </ul>	<ul style="list-style-type: none"> <li>• High density and resistance to humidity</li> <li>• Consistent colour all the way through</li> <li>• Resistant to scratching and wear &amp; tear</li> </ul>
Arpa Multicolor	<ul style="list-style-type: none"> <li>• Point of sale</li> <li>• Table and counter tops</li> <li>• Shelving</li> <li>• Chairs</li> <li>• Reception desks</li> </ul>	<ul style="list-style-type: none"> <li>• High density and resistance to humidity</li> <li>• Combination of coloured layers all the way through</li> <li>• Resistant to scratching and wear &amp; tear</li> </ul>



Leading European  
manufacturer of solid  
surface sheet materials

For more information or to order  
samples, please visit:

[www.performance-panels.com](http://www.performance-panels.com)

# Getacore Solid Surface Collection



## Westag GetaCore®

An exceptionally stable, tempered product with minimal expansion and contraction. Available in large sheet sizes, it can be easily thermoformed into almost any shape.

Batch free production guarantees a colour match in excess of 2 years, and both 3 mm and 10 mm solid surface sheets are available across the extensive colour range.

A joint free appearance can be achieved for seamless integration. This, combined with its exceedingly low porosity and smooth surface, creates a hygienic and easy to clean surface.

GetaCore® can be easily repaired or renewed for long lasting, beautiful designs.

## Fabrication

GetaCore® can be processed with standard woodworking machinery and features such as grooves can be routed in the solid surface; draining areas and sink cut-outs can be made precisely.

APPLICATION	BENEFITS
<ul style="list-style-type: none"> <li>• Point of sale displays</li> <li>• Reception desks</li> <li>• Worktops</li> <li>• Splashbacks</li> <li>• Countertops</li> <li>• Wall linings</li> </ul>	<ul style="list-style-type: none"> <li>• Stable, tempered product with minimal expansion and contraction</li> <li>• 4100 mm x 1250 mm large sheet size for an optimised yield</li> <li>• Batch-free production</li> <li>• Sheets can be easily thermoformed</li> <li>• Ideal for creating a joint-free appearance</li> <li>• Highly heat and moisture resistant</li> <li>• Food safe according to recommendations EN 1186 and EN 13130</li> </ul>



Leading European  
manufacturer of  
polymer-based solutions

For more information or to order  
samples, please visit:

[www.performance-panels.com](http://www.performance-panels.com)

## Crystal Polymeric Glass - 'Smart Glass'



### REHAU Crystal Polymeric Glass

Crystal Polymeric Glass is a smart alternative surface material to conventional glass that can be processed using woodworking tools.

Available in over 20 designs, in high Gloss and Matt finishes.

### REHAU Crystal Slim

4 mm thick Crystal Slim is typically specified for splashback panels and shower wall enclosures for both new and refurbishment projects.

### REHAU Crystal Magnetic

Crystal Magnetic is an interactive surface material containing a steel foil inlay, making it suitable for use with neodymium magnets.

### REHAU Crystal Mirror

Crystal Mirror can be processed on-site using conventional woodworking tools.

It is 50% lighter and 10 x more break resistant than glass, allowing flexible design opportunities.

APPLICATION	BENEFITS
<ul style="list-style-type: none"> <li>• IPS panels</li> <li>• Restrooms</li> <li>• Shower panels</li> <li>• Splashbacks</li> <li>• Whiteboards</li> <li>• Wall linings</li> </ul>	<ul style="list-style-type: none"> <li>• Endless design possibilities with various sheet formats, décors and surface finishes</li> <li>• 10 x more break resistant and 50% lighter than conventional glass</li> <li>• On and off site fabrication capabilities using conventional woodworking tools</li> </ul>



## Services



### Sample requests

We provide a comprehensive sample service with a fast turnaround to help you find the ideal material for your project.

### Material Optimisation

Email your panel schedule to our expert sales team. They will optimise your panel dimensions using the most economic cutting combinations and sheet sizes available; resulting in the best yield and minimal waste option for you.

### Cutting Service

In conjunction with the material optimisation above, we can also provide sheet materials cut to size, unfinished using a standard beam saw.

### Warehousing

We aim to deliver your order in the best condition possible.

This starts in our warehouses, where purpose built vacuum lifts reduce the amount of manual handling each sheet receives, minimising the risk of damage in the picking process.

Sheets are then packed on to a wooden pallet and are protected with a sheet of heavy duty polythene, before being steel banded to ensure negligible movement during transportation.

### Delivery

Standard delivery is by curtain sided vehicle, however small delivery options are available if required.

A suitable forklift truck is required for off-loading.

For more information and terms, contact us:

Web: [www.performance-panels.co.uk/contact-us](http://www.performance-panels.co.uk/contact-us)

Email: [sales@performance-panels.co.uk](mailto:sales@performance-panels.co.uk)

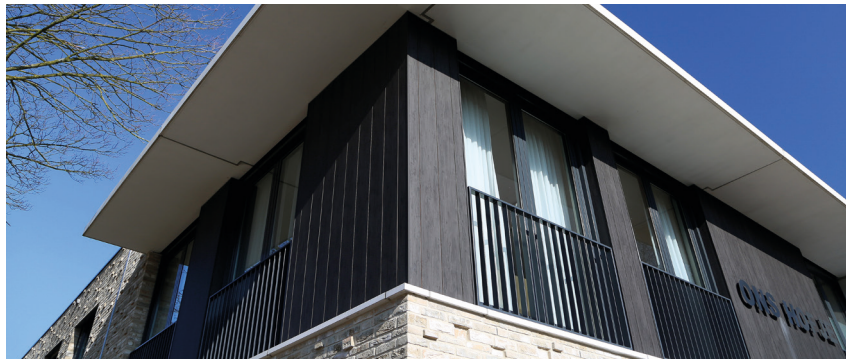
For sample requests:

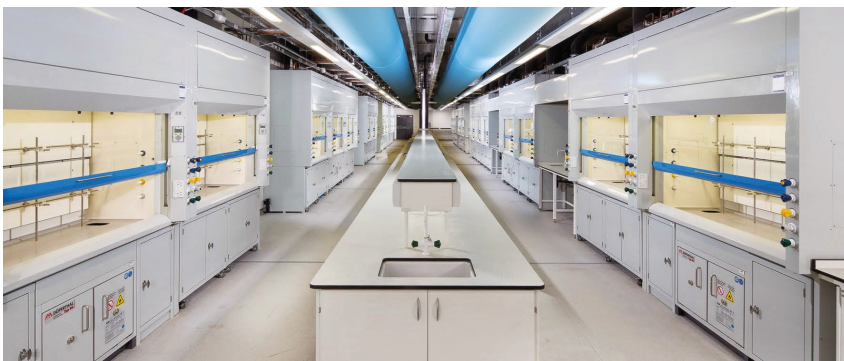
Web: [www.performance-panels.co.uk/sample-request](http://www.performance-panels.co.uk/sample-request)

Email: [samples@performance-panels.co.uk](mailto:samples@performance-panels.co.uk)

## Gallery

Please share your images and case studies with us at:  
[marketing@performance-panels.co.uk](mailto:marketing@performance-panels.co.uk)







Carvic House  
Blackbrook Way,  
Stainland Road,  
Greetland,  
Halifax  
HX4 8ED

Telephone: +44 (0) 1422 310319  
Email: [info@performance-panels.co.uk](mailto:info@performance-panels.co.uk)

[www.performance-panels.co.uk](http://www.performance-panels.co.uk)

